

Manual Pulltester LT-101

Pull-Heads

LT-100	Max. force:	100gr
	Accuracy:	+/-0.25% of max. value
LT-2000	Max. force:	2000gr
	Accuracy:	+/-0.25% of max. value

Machine Base

Axis	Workspace X/Y-Achse 40x40mm Step resolution < 1µm Z-Axis with 40mm lift, + 60mm manual adjustable
Connections	Ethernet, USB 2.0, Bluetooth
Display	7" Touch LCD Display
Control	High-performance embedded ARM-System with Real-time operating system
Dimensions	W xD x H – 55 x 40x 50 cm, weight approx.. 22 kg
Power	100-240 VAC, 1 Phase, 50/60 Hz, max 230 VA

Labtester Series:

The LT-101 unit is small and compact Pulltester, equipped with the most up-to-date software and available for thin and heavy wire applications

Perfect for easy and fast performed Pulltests

Optional available with our optical inspection system OI-101

Workholder

Standard-Workholder for LAB-Tester



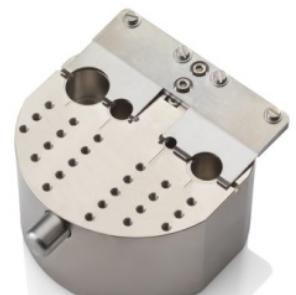
Standard



DIL



with jaws



TO

Optional-Workholder (Vacuum-Base) for LT-2000 Pullhead



F&S Bondtec Semiconductor GmbH

Industriezeile 49a

A-5280 Braunau am Inn

Tel.: +43-7722-67052-8270

Fax: +43-7722-67052-8272

Mail: info@fsbondtec.at

Web: www.fsbondtec.at

