



Thin Wire Wedge-Wedge Bonder 5630

Bond System

Wire types	Aluminium and gold wire 17,5–75µm on 2" spool
Bondhead	Wedge-Wedge for thin wire Standard tool 16mm (optionally 19mm) Standard wedges of 1" length, 45° wire feed Motorized wire spool (optional)
Ultrasonic System	F&S Generator 100 kHz (optional 65, 140kHz)

Bonder Base

Axes

- Working area X/Y-axis 100x100mm
Z-axis 60mm
- Step resolution 0,25µm
- Repeatability <2µm

Hardware

- Dual Core PC, 1,6 GHz processor,
- 4 GB RAM, Ethernet, 4x USB-Hub Front
- Firewire CCD colour camera 1,4 MPixel
- Network-capable with TCP / IP server

Software

- Single bonds up to complex programs,
- Loop shapes can be saved in libraries
- Optional pattern recognition

Placement accuracy: +/- 5µm @ 3 sigma, incl. Tool / no wire
on F&S Bondtec standard substrate

Repeatability: +/- 3 µm @ 3 sigma, incl. Tool / without wire
on F&S Bondtec standard substrate

Loop height accuracy: +/- 5µm @ 3 sigma, for thin wire 5630
with 25µm aluminum wire on F&S Bondtec
standard substrate

Die 56xx Series:

The semi-automatic Wedge-Wedge Bonder 5630 fills the gap between the manual Wedge to the automatic-bonder. He is on basis 5600-series fully PC controlled and allows any number of bonds to be programmed.

Pre-programmed adjust points are targeted through the camera's cross hair targeting system and the programmed bonds are executed automatically.

Two operating modes are available: Single bond for repair of various bond samples and making single bonds (manual/automatic) and multi wire for teaching and bonding chips or various bond samples (semi & fully automatic).

The 5630 can also be used as Gold Wire or Alu Heavy Wire as well as pull-/shear tester by simply replacing the bond head and loading the appropriate software.

Set up time: ~3 minutes.
Ask us for more information !

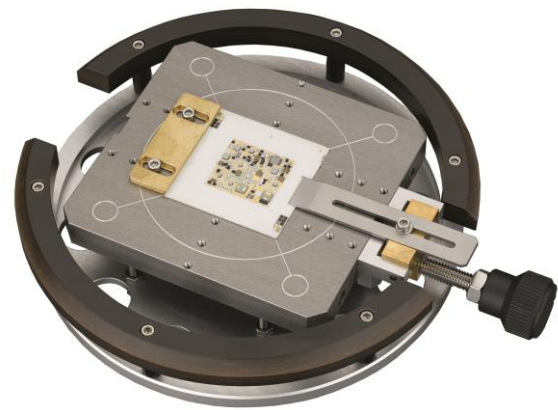
BONDING THE STARS



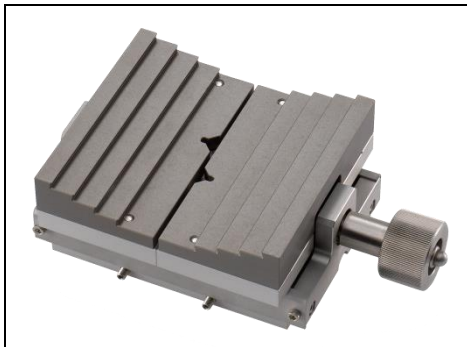
- Speed** 20 wires per minute
- Dimensions** W x D x H – 70 x 65x 70 cm, weight approx. 80kg
- Connections** 100-240 VAC, 1 Phase, 50/60 Hz, max 500 VA
Ø 6mm standard vacuum tubing
- Heater controller** Integrated in the machine 0-250C°

Workholder

Standard-Workholder
for parts up to 4x4"
with Vacuum und mechanical clamping



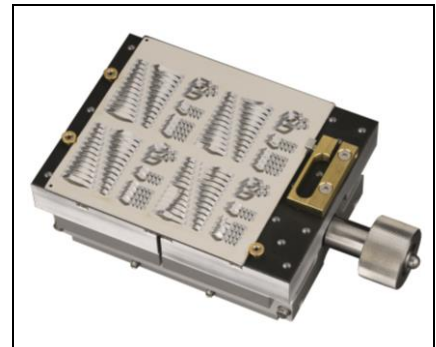
Optional:



workholders up to 4x4"
with jaws



TO workholder with
mechanical clamping



4x4" workholder with
rubberized surface and
mechanical clamping

F&S Bondtec Semiconductor GmbH

Industriezeile 49a
A-5280 Braunau am Inn
Tel.: +43-7722-67052-8270
Fax: +43-7722-67052-8272
Mail: info@fsbondtec.at
Web: www.fsbondtec.at

