



## Deep-Access Wedge-Wedge Bonder 5632

### Bond System

<b>Wire types</b>	Aluminium and gold wire 17,5-75µm on 2" spool Ribbons from 30x12,5µm to 250x25µm
<b>Bondhead</b>	Wedge-Wedge for Ribbon and thin wire Standard tool of 1" length, 3/4" (optional) motorized wire spool (optional)
<b>Ultrasonic System</b>	F&S Generator 67 kHz (optional 40, 90, 120kHz)

### Bonder Base

#### Axes

- Working area X/Y-axis 100x100mm  
Z-axis 60mm
- Step resolution 0,25µm
- Repeatability <2µm

#### Hardware

- Dual Core PC, 1,6 GHz processor,
- 4 GB RAM, Ethernet, 4x USB-Hub Front
- Firewire CCD colour camera 1,4 MPixel
- Network-capable with TCP / IP server

#### Software

- Single bonds up to complex programs,
- Loop shapes can be saved in libraries
- Optional pattern recognition

**Placement accuracy:** +/- 5µm @ 3 sigma, incl. Tool / no wire  
on F&S Bondtec standard substrate

**Repeatability:** +/- 3 µm @ 3 sigma, incl. Tool / without wire  
on F&S Bondtec standard substrate

**Loop height accuracy:** +/- 5µm @ 3 sigma, for thin wire 5630  
with 25µm aluminum wire on F&S Bondtec  
standard substrate

### Die 56xx Series:

The semi-automatic Wedge-Wedge Bonder 5632 fills the gap between the manual Wedge-Bonder series 53xx to the automatic-Bonder. The 5632 Deep-Access Bonder can be used also as Ribbon-Bonder.

It is on basis 5600-series fully PC controlled and allows any number of bonds to be programmed.

Pre-programmed adjust points are targeted through the camera's cross hair targeting system and the programmed bonds are executed automatically.

Two operating modes are available: Single bond for repair of various bond samples and making single bonds (manualautomatic) and multi wire for teaching and bonding chips or various bond samples (semi and fully automatic).

The 5632 can also be used as Gold Wire, Ball or Alu Heavy Wire Bonder as well as pull-/shear tester by simply replacing the bond head and loading the appropriate software.

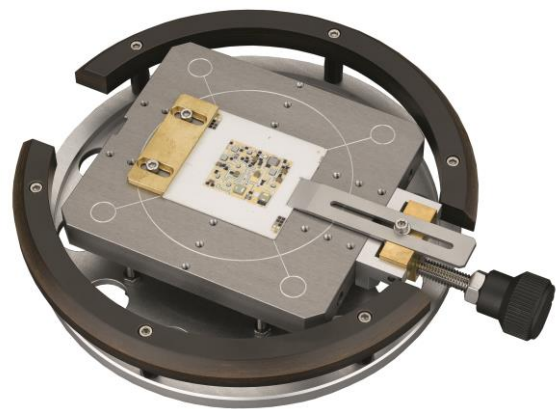
Set up time: ~5 minutes.

Ask us for more information !

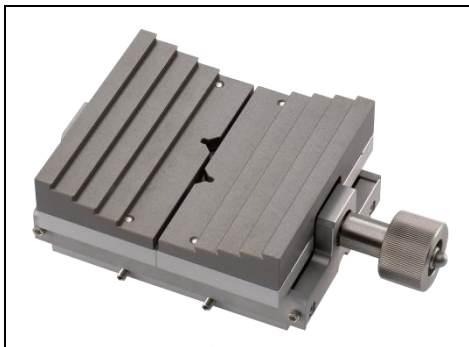
- Speed** 20 wires per minute
- Dimensions** W x D x H – 70 x 65x 70 cm, weight approx. 80kg
- Connections** 100-240 VAC, 1 Phase, 50/60 Hz, max 500 VA  
Ø 6mm standard vacuum tubing
- Heater controller** Integrated in the machine 0-250C°

## Workholder

Standard-Workholder  
for parts up to 4x4"  
with Vacuum und mechanical clamping



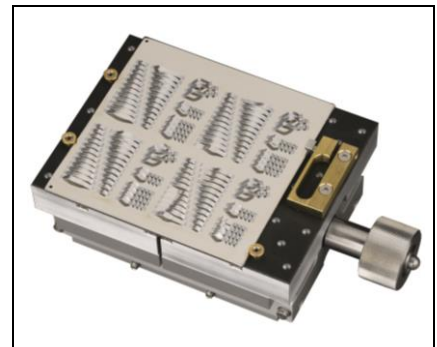
## Optional:



workholders up to 4x4"  
with jaws



TO workholder with  
mechanical clamping



4x4" workholder with  
rubberized surface and  
mechanical clamping

## F&S Bondtec Semiconductor GmbH

Industriezeile 49a

A-5280 Braunau am Inn

Tel.: +43-7722-67052-8270

Fax: +43-7722-67052-8272

Mail: [info@fsbondtec.at](mailto:info@fsbondtec.at)

Web: [www.fsbondtec.at](http://www.fsbondtec.at)

