

## Heavy-Wire Wedge Bonder

### 5850

### Bond System

<b>Wire types</b>	Aluminium wire 100-500µm on 4" spool Copper wire 100-300µm on 4" spool
<b>Bondhead</b>	Wedge-Wedge for heavy wire, Front or Backcut, Standard wedges of 2" length, (up to 90mm) Motorized wire despooler (optional) Programmable Voice-oil bond force system From 0 up to 1.800 cN
<b>Ultrasonic System</b>	F&S Generator 60 kHz (optional 40, 90, 120)

### Bonder Base

<b>Axes</b>	<ul style="list-style-type: none"> <li>• Working area X/Y-axis 200 x 150 mm;</li> <li>• Programmable step resolution 1µm</li> <li>• Programmable Z axis with 100 mm stroke;</li> </ul>
<b>Hardware</b>	<ul style="list-style-type: none"> <li>• Dual-Core PC with Windows OS, Ethernet,</li> <li>• USB 2.0/3.0, Colour Display 22"</li> <li>• GigE-CCD-Colour Camera, 5 Mpixel</li> <li>• Fully networkable in TCP/IP servers</li> </ul>
<b>Software</b>	<ul style="list-style-type: none"> <li>• From single bonds up to complex programmes,</li> <li>• Loop shapes can be saved in libraries</li> <li>• Optional pattern recognition</li> </ul>
<b>Control</b>	<ul style="list-style-type: none"> <li>• high-performance embedded ARM-System with Real-time operating system for precision</li> <li>• 1 wire / second</li> </ul>
<b>Dimensions</b>	W x D x H 92 x 71 x 65 cm, weight approx. 80 kg
<b>Connections</b>	100-240 VAC, 1 Phase, 50/60 Hz, max 230 VA Ø 6 mm standard vacuum tubing
<b>Heater controller</b>	Integrated in the machine 0-250°C

### The 58xx series:

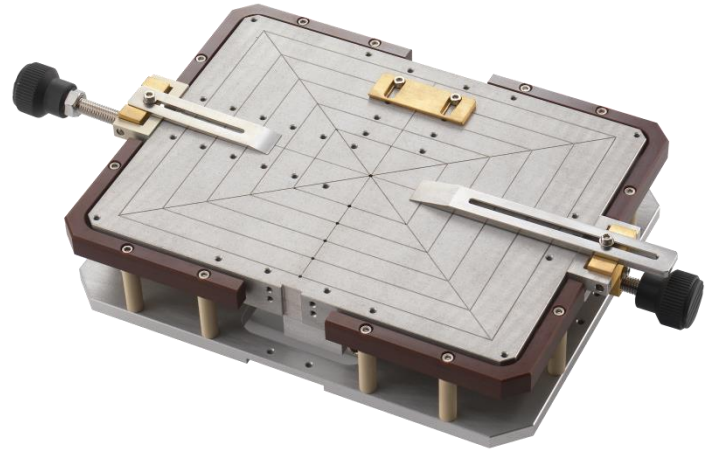
The Heavy-wire version of the automatic wire bonders in our Series 58 featuring exchangeable bond heads.

A fully automatic mode makes it ideally suited for medium-scale production. Parts to be bonded are fed manually by the operator, but the bonds are produced completely without operator influence.

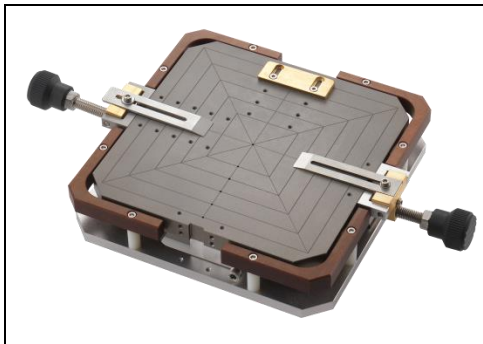
Thanks to the built-in pattern recognition. Single bonds can be made within seconds, making the machine perfect for R&D, Pilot manufacturing and middle volume production.

## Workholder

Standard-Workholder  
for parts up to 8x6"  
with Vacuum und mechanical clamping



## Optional:



**6 x6" workholder** with Vacuum  
and mechanical clamping



**TO Workholder**  
with mechanical clamping



**4x4" workholder** with  
rubberized surface and  
mechanical clamping

### F&S Bondtec Semiconductor GmbH

Industriezeile 49a

A-5280 Braunau am Inn

Tel.: +43-7722-67052-8270

Fax: +43-7722-67052-8272

Mail: [info@fsbondtec.at](mailto:info@fsbondtec.at)

Web: [www.fsbondtec.at](http://www.fsbondtec.at)

