



LAB-Tester LT101

Service Manual V1.0

About this quick guide:

This short manual gives an overview of the maintenance of the drive axles

- Safety and Warning Instructions
- Correct removal and assembly of the machine's drive axles

Table of contents

ABOUT THIS QUICK GUIDE: 2

1. SERVICE BASICS: 4

- 1.1 Switch off Bondtester 4

2. MAINTENANCE OF THE Z-AXIS: 5

- 2.1 Removing the Z-axis: 5
 - 2.1.1 Disassembling the test head 5
 - 2.1.2 Dismounting the Z-axis 6
 - 2.1.3 removing the Axis 6
 - 2.1.4 Removing the protection cover 6
 - 2.1.5 Cleaning the axle 7
 - 2.1.6 Assembly of the axis 7

3. MAINTENANCE OF THE X/Y AXES: 8

- 3.1. Removing the X/Y axes 8
 - 3.1.1 Remove the armrests (left and right) and disconnect the USB cable 8
 - 3.1.2 Removing the worktop 8
 - 3.1.3 Removing the housing cover 9
 - Disconnecting the ground connection 10
 - 3.1.4 Unscrewing the mounting block 11
 - 3.1.5 Opening the Y-axis 12
 - 3.1.6 Dismounting the Y-axis 13
 - 3.1.7 Removing the axle plate 13
 - 3.1.8 Open and the X axis 13
 - 3.1.9 Cleaning the X/Y axis 14

4. ASSEMBLING THE MACHINE 15

- 4.1 Functional test 15

5. FOR YOUR SAFETY: 16

- 5.1. Dangers in handling the machine 16
- 5.2 Security measures 5.2.1 Staff requirements 16

ONLY TRAINED AND INSTRUCTED PERSONNEL MAY WORK ON THE MACHINE. THE RESPONSIBILITY OF THE PERSONNEL MUST BE CLEARLY DEFINED FOR ASSEMBLY, COMMISSIONING, OPERATION, SET-UP, MAINTENANCE AND REPAIR. PERSONNEL TO BE TRAINED MAY ONLY WORK ON THE MACHINE UNDER THE SUPERVISION OF AN EXPERIENCED PERSON. **16**

- 5.2.2 Safety devices 17
- 5.2.2 attached symbols 17
- 5.2.3 Safety devices 18

1. Service Basics:

1.1 Switch off Bondtester

Secure the bond tester off and before switching it on again:



Before opening the machine, ensure that the machine has been switched off on all poles, the power cable has been removed and all necessary safety precautions have been taken (see 5.1 "Dangers in handling the machine")

LT101

2. Maintenance of the Z-axis:

2.1 Removing the Z-axis:

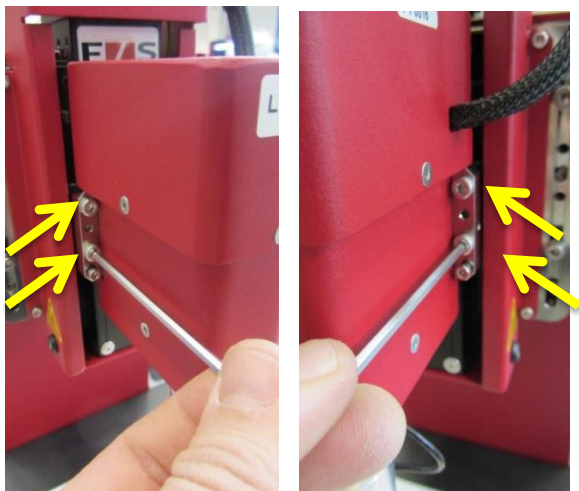
2.1.1 Disassembling the test head



Mounting the protective cage

Remove the head cable.

Open the 4 fastening screws on the test head

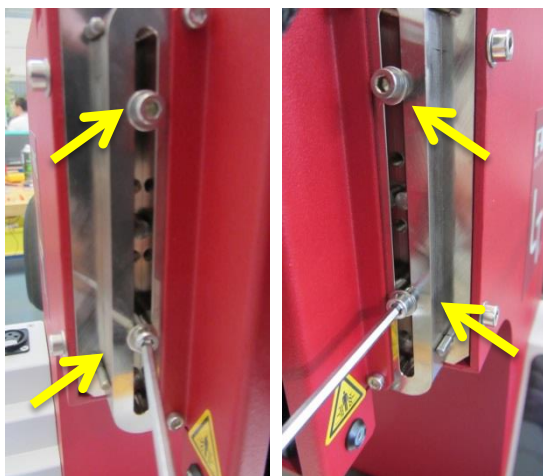


Careful removal of the test head

2.1.2 Dismounting the Z-axis

Remove the axis cable.

Open the 4 fastening screws



2.1.3 removing the Axis



2.1.4 Removing the protection cover



LT101

2.1.5 Cleaning the axle



Degrease and clean the spindle and linear guides with cleanroom cloths and industrial alcohol or spirit.

Then re-lubricate the spindle and the linear guides with a machine grease suitable for cleanroom use. (e.g.: ISO FLEX Klüber NBU 15)

Available under the order number VK-DIV-B00007

2.1.6 Assembly of the axis



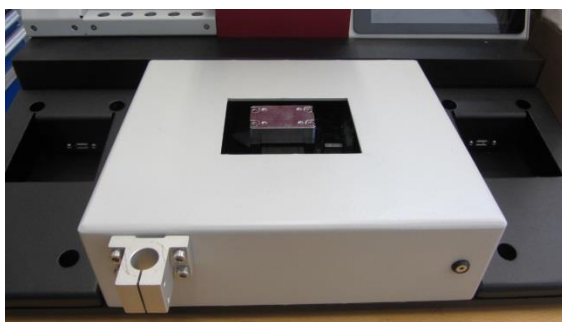
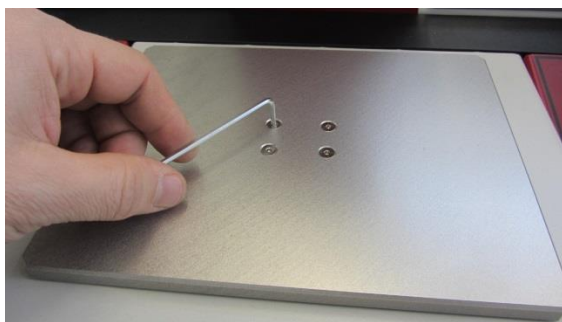
3. Maintenance of the X/Y axes:

3.1. Removing the X/Y axes

3.1.1 Remove the armrests (left and right) and disconnect the USB cable

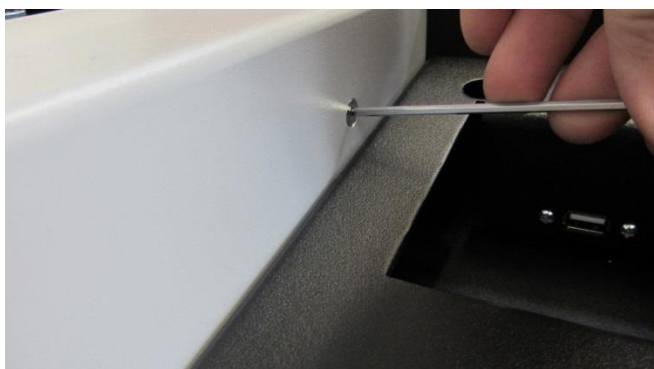


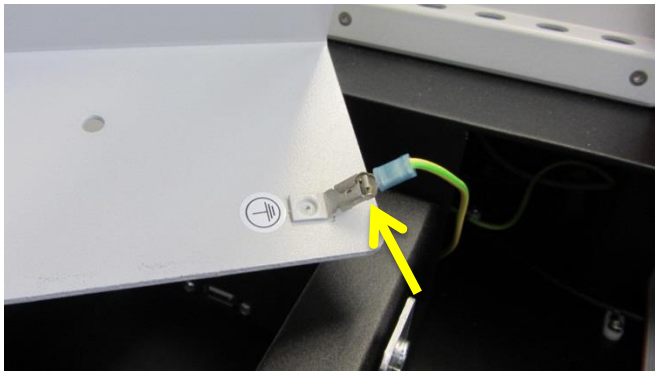
3.1.2 Removing the worktop



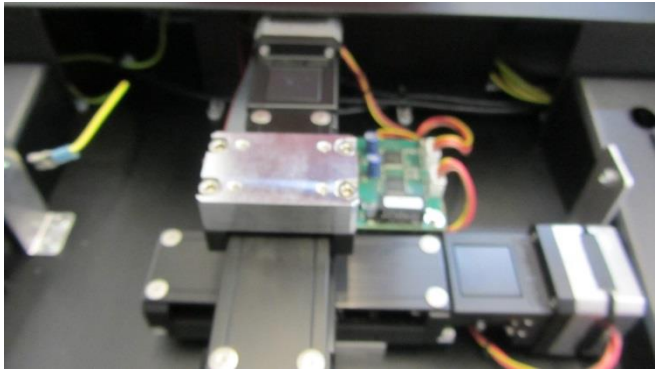
LT101

3.1.3 Removing the housing cover



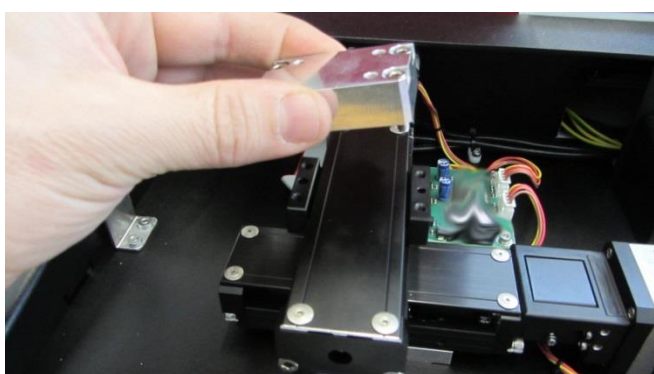
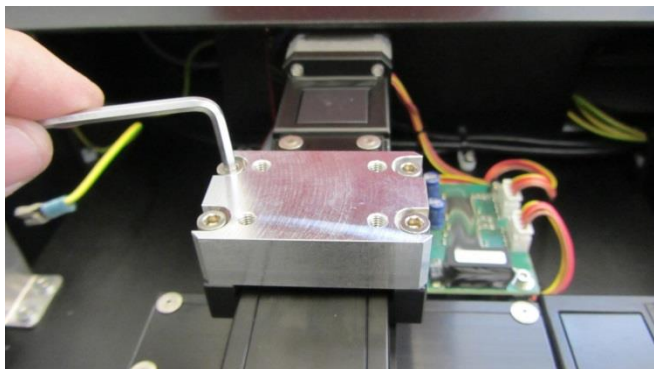


Disconnecting the ground connection

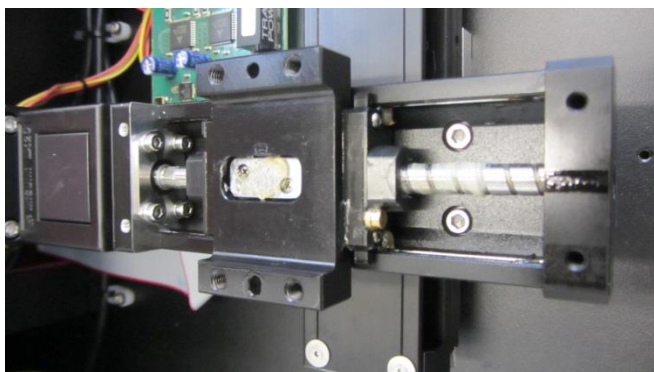
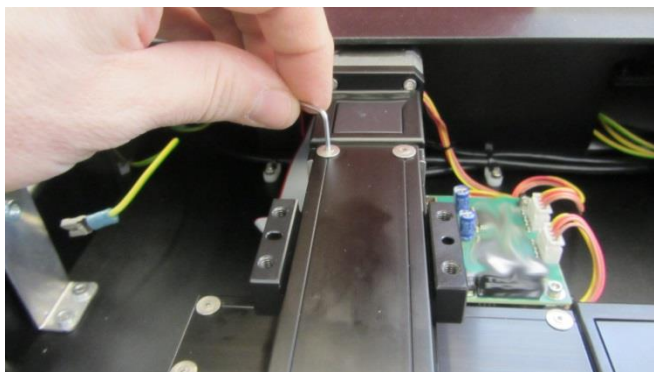


LT101

3.1.4 Unscrewing the mounting block

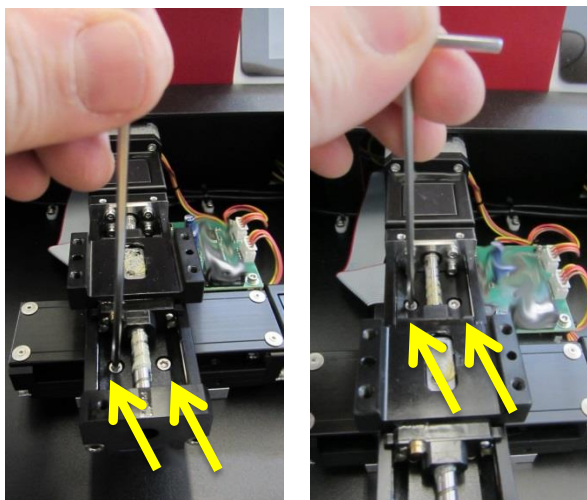


3.1.5 Opening the Y-axis

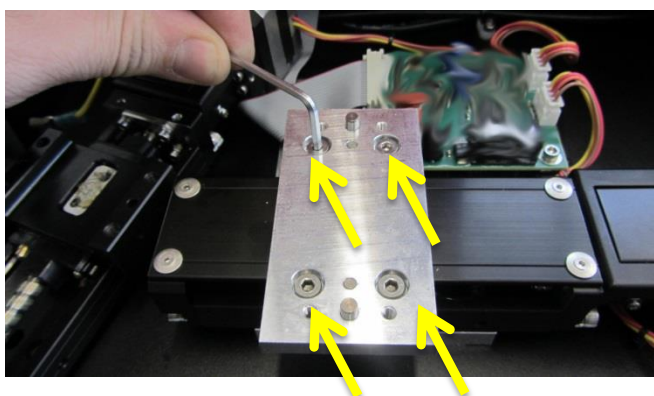


LT101

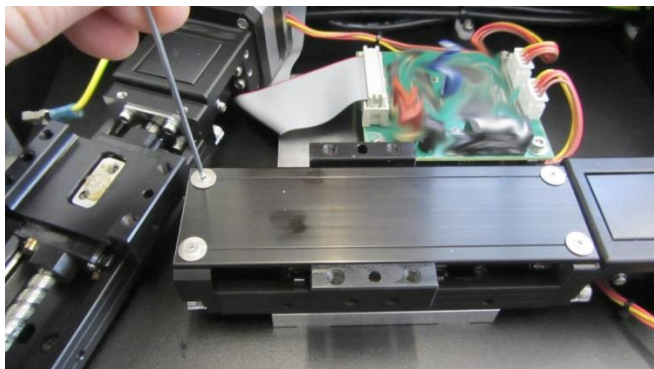
3.1.6 Dismounting the Y-axis

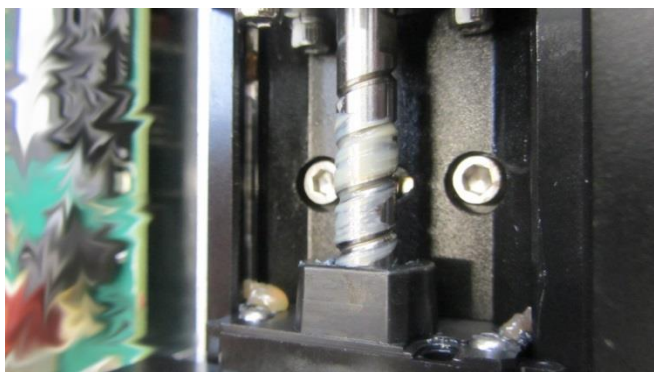
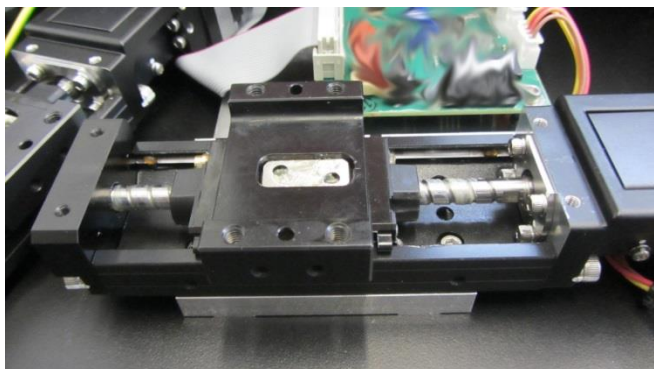


3.1.7 Removing the axle plate



3.1.8 Open and the X axis



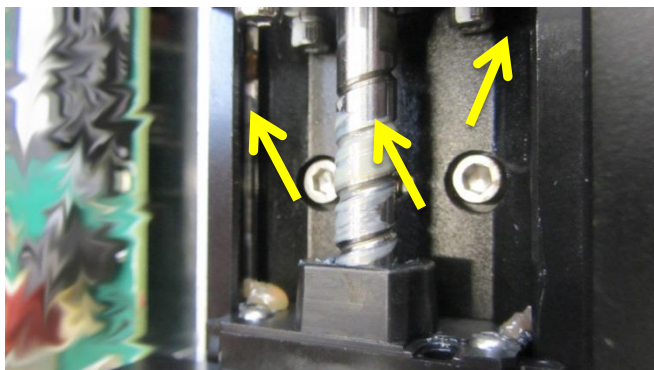


3.1.9 Cleaning the X/Y axis

Degrease and clean the spindle and the linear guides with cleanroom cloths and industrial alcohol or spirit.

Then re-lubricate the spindle and the linear guides with a machine grease suitable for cleanroom use. (e.g.: ISOFLEX Klüber NBU 15)

Available under the order number VK-DIV-B00007



4. Assembling the machine

Reassemble the machine in reverse order (3.1.8 - 2.1)



DANGER

Make sure that the removed earth cable is properly reconnected

4.1 Functional test

After assembling the machine, you can reconnect the supply cable and switch on the machine.

Check all functions of the machine before starting real pull tests.

5. For your safety:

5.1. Dangers in handling the machine

The bond test machines of F&S BONDTEC correspond to the state of the art and the safety regulations.



Use the bond tester only

- according to its intended use

- in perfect condition for safety reasons

Improper use may endanger the life of the user or third parties or cause damage to machinery or property. Safety-relevant faults must be eliminated immediately and professionally.

5.2 Security measures

5.2.1 Staff requirements

Only trained and instructed personnel may work on the machine.

The responsibility of the personnel must be clearly defined for assembly, commissioning, operation, set-up, maintenance and repair.

Personnel to be trained may only work on the machine under the supervision of an experienced person.

LT101**5.2.2 Safety devices**

All guards must be properly fitted and in working order before starting the machine.

Safety devices may only be removed

- after standstill and
- after protection against restarting the machine

If partial components are supplied, the operator must install the protective devices in accordance with regulations.

5.2.2 attached symbols

Please note the stickers attached to the machine:



Unplug before opening



Warning of electrical voltage



Warning of running machine

All three symbol stickers are only available when the machine is equipped with the maximum amount of machinery. The stickers must not be removed and must be replaced if they are damaged. Ensure that these symbols are not dirty and are in a clearly legible condition.

5.2.3 Safety devices



The bond tester can be stopped from any operating situation by pressing the EMERGENCY STOP button.

The switch remains locked in the pressed position.

To start the Bondtester after an EMERGENCY STOP operation:

- rectify the fault that caused the EMERGENCY OFF switch to be pressed.
- To unlock the EMERGENCY OFF switch: turn the red ring clockwise
- Switch on the bond tester again

F&S BONDTEC Semiconductor GmbH

Industriezeile 49a
A-5280 Braunau

Tel: +43 (0)7722-67052-8270

Fax: +43 (0)7722-67052-8280

E-Mail: info@fsbondtec.at

www.fsbondtec.at