



Heavy Wire Wedge Bonder

5350

Bond System

Wire types	Aluminium wire 100-500µm on 4" spool Copper wire 100-300µm on 4" spool
Bondhead	Wedge-Wedge for Heavy wire, Front- or Backcut Standard tool length 2" Motorized wire spool (optional) Programmable Voice-coil bond fore system From 0 up to 1800cN
Ultrasonic System	F&S Generator 58kHz (optional 40, 90, 120kHz)

Bonder Base

Axes	<ul style="list-style-type: none"> • Programmable linear Z-axis with 60mm stroke • Programmable linear Y-axis with 20mm stroke • Standard working height: 55 mm • Manipulator in X and Y: 18x18 mm • Equivalent to: 1: 7
Hardware	<ul style="list-style-type: none"> • Stepper motor driven Z-linear axis, • Single-board PC, coin-guided teach-in, • Internal hard disk, operation and menu-guided via shuttle wheel with confirmation button
Software	<ul style="list-style-type: none"> • Programmable single Bonds • Loop shapes can be saved
Control	Manual, semil-automatic
Dimensions	W x D x H – 63 x 58 x 40 cm, weight approx. 30kg
Connections	100-230 VAC, 1 Phase, 50/60 Hz, max230 VA Ø 6mm standard-vacuum tubing
Heater controller	Integrated in the machine 0-250 °C

The 53xx Series:

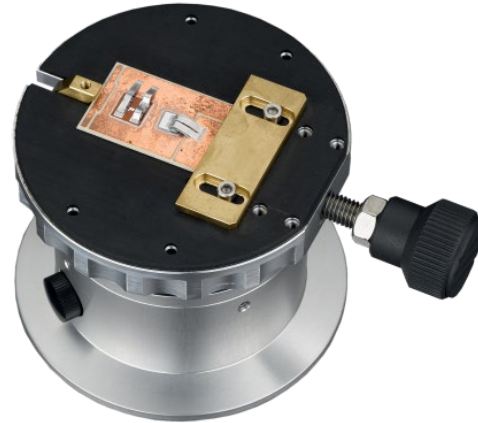
Our manual/semiautomatic bonder 5350 for heavy wire is ideally suited for R&D labs, prototype and pilot production and repair facilities who only have limited budgets but need highest bond quality.

Its most outstanding feature is a full-blown automatic wire cutting unit which guarantees perfectly reproducible wire cuts at single-micron precision without any risk of component damage. Thanks to a motorized Y-axis of 25 mm travel in addition to the motorized Z axis, it also offers perfectly identical bond tails through a programmable, automatic step-back.

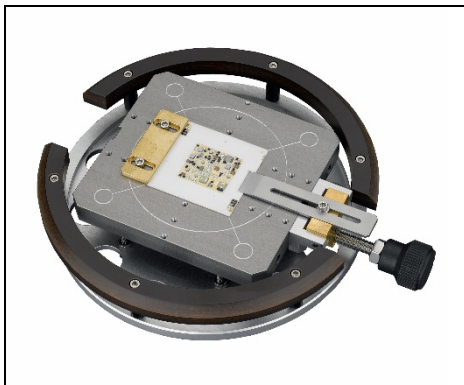
Hard- and software of the 5350 are very similar to the 5310, 5330 and 53XX BDA thin-wire bonders from the 53xx family. This keeps training and maintenance cost extremely low. At the same time, the bond head is almost identical to that of the fully automatic bonders from F&S BONDTEC, ensuring bonds of the highest quality and making scale-up to larger production volumes trouble-free.

Workholder

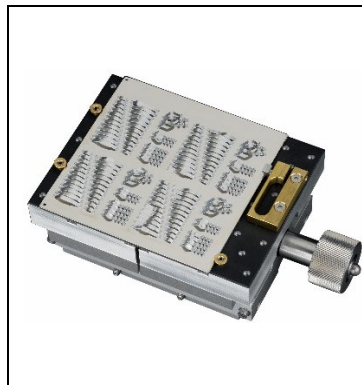
Standard-Workholder
for parts up to 2x2" with
vacuum and mechanical clamping



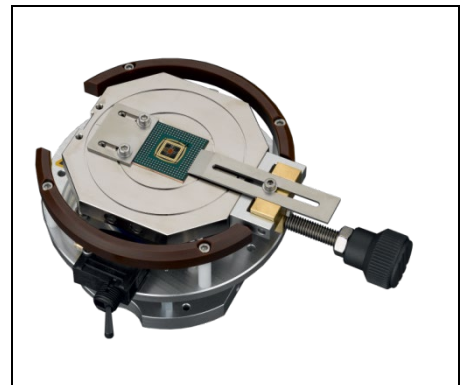
Optional:



for parts up to 4x4"
workholder with mechanical
clamping



4x4" workholder with
rubbered surface and
mechanical clamping



Ø80mm Workholder
With mechanical clamping

F&S Bondtec Semiconductor GmbH

Industriezeile 49a

A-5280 Braunau am Inn

Tel.: +43-7722-67052-8270

Fax: +43-7722-67052-8272

Mail: info@fsbondtec.at

Web: www.fsbondtec.at

