



## Universal automatic Bonder & Tester 5600Ci

### Bond System

**Testheads** Pullheads – 100 cN – 5000 cN  
Shearheads – 500 cN – 5000 cN

**Bondheads** 10i, 30i, 32i, 50i, 50iHR

### Bonder / Tester Base

#### Axes

- Working area X/Y-axis 100 x 100 mm
- Step resolution 1 µm programmable
- Programmable Z-axis with 60mm stroke

#### Hardware

- Dual-Core PC with Windows OS Ethernet
- USB 2.0/3.0, LCD Color display 22"
- GigE-CMOS-Color camera
- Network compatible with program archiving

#### Software

- Automatic repeat measurements on hybrids or COB using the programmable table movement
- Optional pattern recognition
- Statistics such as mean value, standard deviation, trend, cp, cpk, etc. Based on SQL Database
- Automatic calculation of the real pull forces at the bond points for standard compliant tests

#### Speed

- 1 wire / 2 - 3 seconds

#### Accuracy

- 0,1 % over the entire measuring range

#### Dimensions

W x D x H – 70 x 65x 70 cm, weight approx. 75 kg

#### Connections

100-240 VAC, 1 Phase, 50/60 Hz, max 500 VA  
Ø 6mm standard vacuum tubing

### 5600Ci:

The fullautomatic bond tester 5600Ci complements F&S BONDTEC Semiconductor GmbH die- and wire- bonders. The PC controlled moving table allows any number of bonds to be tested automatically from a stored program.

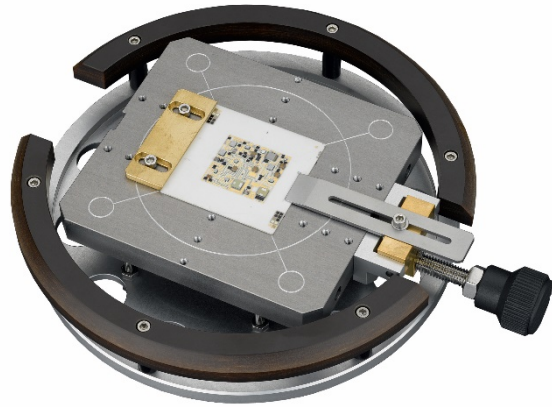
Results can be analysed and output immediately or exported in a number of data base formats for subsequent analysis as desired. Powerful extended capabilities enable measurements such as force/time curves to be made and deliver more data about the quality of the bond tested.

Exchangeable measurement cartridges ensure rapid conversion to different force ranges. The calibration curves of all measurement cartridges are stored internally; additional heads for shear, peel and tweezer testing with customer-specific tools and jaws are available.

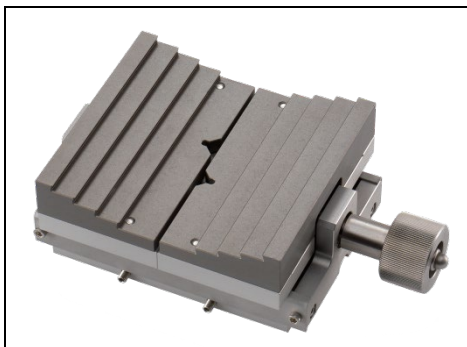
After a first programming a reproducible pull- or sheartest can be guaranteed for all following components.

## Workholder

Standard-Workholder  
for parts up to 4x4"  
with Vacuum und mechanical clamping



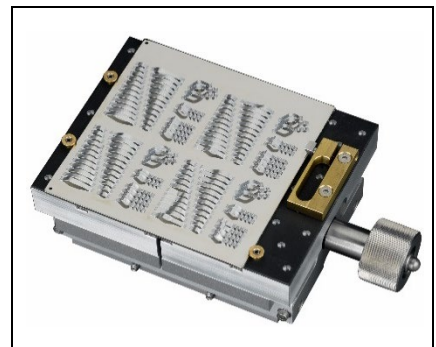
## Optional:



workholders up to 4x4"  
with jaws



TO workholder with  
mechanical clamping



**4x4" workholder** with  
rubberized surface and  
mechanical clamping

**F&S BONDTEC Semiconductor GmbH**

Industriezeile 49a

A-5280 Braunau am Inn

Tel.: +43-7722-67052-8270

Fax: +43-7722-67052-8272

Mail: [info@fsbondtec.at](mailto:info@fsbondtec.at)

Web: [www.fsbondtec.at](http://www.fsbondtec.at)

