



Heavy Wire Wedge- Wedge Bonder 5650i

Bond System

Wire types	Aluminium wire 100 - 500 μm on 4" spool Copper wire 100 - 300 μm on 4" spool
Bondhead	Wedge-Wedge for heavy wire, Front- or Backcut Standard tool of 2" length, (up to 90 mm) Motorized wire spool (optional) Programmable Voice-oil bond force system From 0 up to 1.800 cN
Ultrasonic System	F&S Generator 58 kHz (optional 40, 90, 120)

Bonder Base

Axes	<ul style="list-style-type: none"> • Working area X/Y-axis 100 x 100 mm • Step resolution 1 μm programmable • Programmable Z-axis with 60mm stroke
Hardware	<ul style="list-style-type: none"> • Dual-Core PC with Windows OS Ethernet • USB 2.0/3.0, LCD Color display 22" • GigE-CMOS-Color camera • Network compatible with program archiving
Software	<ul style="list-style-type: none"> • Single bonds up to complex programs • Loop shapes can be saved in libraries • Optional pattern recognition
Placement accuracy:	+/- 5 μm @ 3 sigma, incl. Tool / no wire on F&S BONDTEC standard substrate
Repeatability:	+/- 3 μm @ 3 sigma, incl. Tool / without wire on F&S BONDTEC standard substrate
Loop height accuracy:	+/- 5 μm @ 3 sigma, for thin wire 5630i with 25 μm aluminum wire on F&S BONDTEC standard substrate

Die 56xxi Series:

The semi-automatic Wedge-Wedge Bonder 5650i fills the gap between the to the automatic bonder.

Based 56xxi-series the bonder is fully PC controlled and allows any number of bonds to be programmed.

Pre-programmed adjust points are targeted through the camera's cross hair targeting system and the programmed bonds are executed automatically.

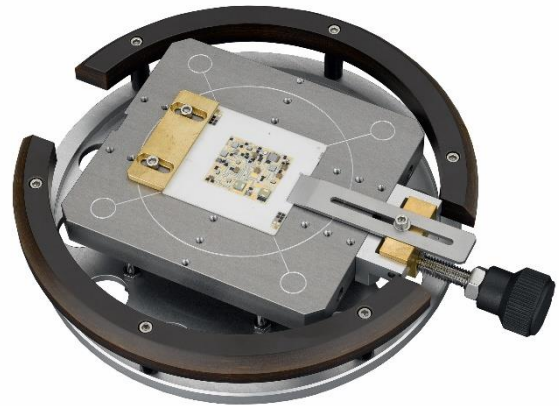
Two operating modes are available: Single bond for repair of various samples in order to perform a single bond. (manual-automatic) Multi wire for teaching and bond-ing of single chips or various samples (semi & fully automatic). The 5650i can also be used as a Au Wire or AL Thin Wire Bonder as well as pull-/shear tester by simply replacing the bond head and loading the appropriate soft-ware.

Set up time: ~3 minutes.
Ask us for more information!

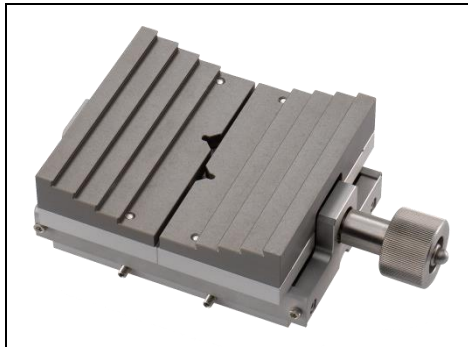
- Speed** 1 wire / 2 - 3 seconds
- Dimensions** W x D x H – 70 x 65x 70 cm, weight approx. 75 kg
- Connections** 100-240 VAC, 1 Phase, 50/60 Hz, max 500 VA
Ø 6mm standard vacuum tubing
- Heater controller** Integrated in the machine 0-250C°

Workholder

Standard-Workholder
for parts up to 4x4"
with Vacuum und mechanical clamping



Optional:



workholders up to 4x4"
with jaws



TO workholder with
mechanical clamping



4x4" workholder with .
rubberized surface and
mechanical clamping

F&S BONDTEC Semiconductor GmbH

Industriezeile 49a
A-5280 Braunau am Inn
Tel.: +43-7722-67052-8270
Fax: +43-7722-67052-8272
Mail: info@fsbondtec.at
Web: www.fsbondtec.at

