



Deep-Access Wedge-Wedge Bonder 5832

Bond System

Wire types	Aluminium and gold wire 17,5-75µm on 2" spool Ribbon from 30x12,5µm to 250x25µm
Bondhead	Wedge-Wedge for Ribbon and thin wire Standard wedges of 1" length, (¾" optional) Motorized wire spool (optional)
Ultrasonic System	F&S Generator 100 kHz (optional 65, 120, 140kHz)

Bonder Base

Axes

- Working area X/Y-axis 200 x 150 mm;
- Programmable step resolution 1 µm
- Programmable Z axis with 100 mm stroke;

Hardware

- Dual-Core PC with Windows OS, Ethernet,
- USB 2.0/3.0, Colour Display 22"
- GigE-CCD-Colour Camera, 5 Mpixel
- Fully networkable in TCP/IP servers

Software

- From single bonds up to complex programmes,
- Loop shapes can be stored in libraries
- Optional pattern recognition

Control

- high-performance embedded ARM-System with Real-time operating system for precision
- 1 wire / second

Placement accuracy: +/- 5µm @ 3 sigma, incl. Tool / no wire on F & S Bondtec standard substrate

Repeatability: +/- 3 µm @ 3 sigma, incl. Tool / without wire on F & S Bondtec standard substrate

Loop height accuracy: +/- 5µm @ 3 sigma, for thin wire 5830 with 25µm aluminum wire on F & S Bondtec standard substrate

The 58xx series:

The Deep-Access Wedge-Wedge version of the automatic wire bonders in our Series 58xx featuring exchange able bond heads.

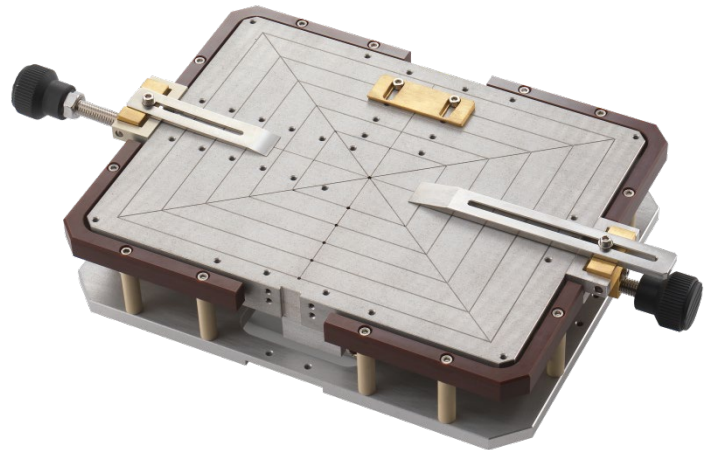
A fully automatic mode makes it ideally suited for medium-scale production. Parts to be bonded are fed manually by the operator, but the bonds are produced completely without operator influence.

Thanks to the built-in pattern recognition. Single bonds can be made within seconds, making the machine perfect for R&D, Pilot manufacturing and middle volume production.

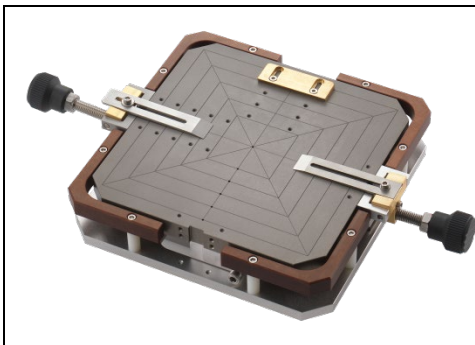
- Dimensions** WxDxH 92x71x65 cm, weight approx. 80 kg
- Connections** 100-240 VAC, 1 Phase, 50/60 Hz, max 230 VA
Ø 6 mm standard vacuum tubing
- Heater controller** Integrated in the machine 0-250°C

Workholder

Standard-Workholder
for parts up to 8x6"
with Vacuum and mechanical clamping



Optional:



6x6" workholder with Vacuum
and mechanical clamping



TO Workholder
with mechanical
clamping



4x4" workholder with
rubberized surface and
mechanical clamping

F&S Bondtec Semiconductor GmbH

Industriezeile 49a
A-5280 Braunau am Inn
Tel.: +43-7722-67052-8270
Fax: +43-7722-67052-8272
Mail: info@fsbondtec.at
Web: www.fsbondtec.at

